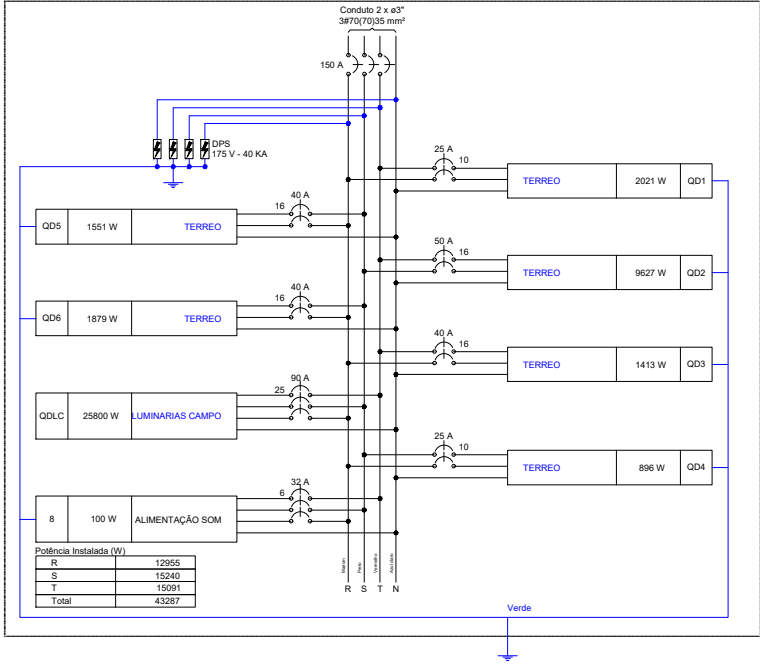
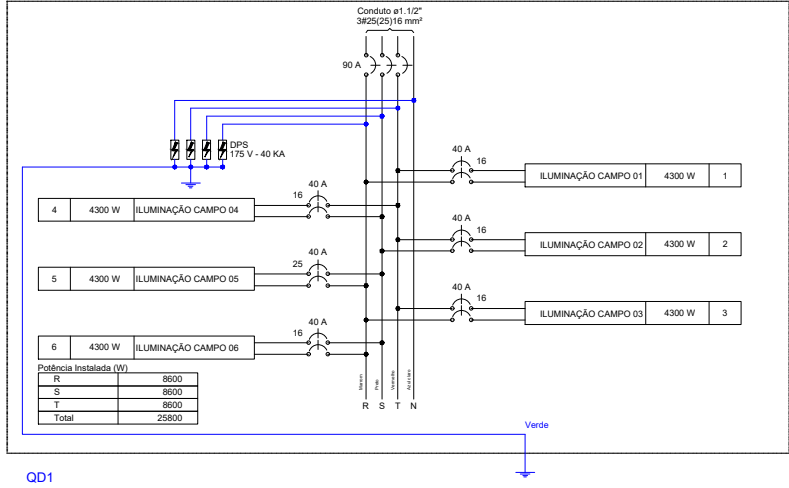


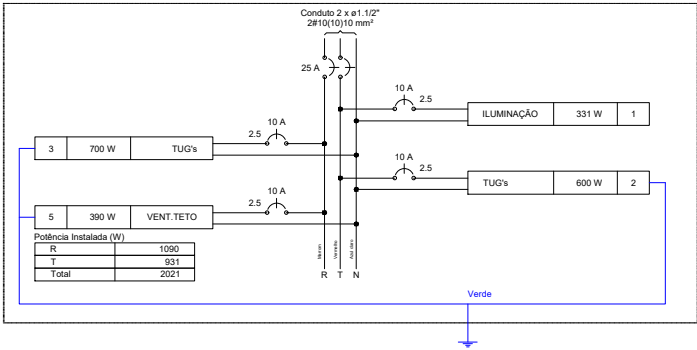
QDG (GERAL)



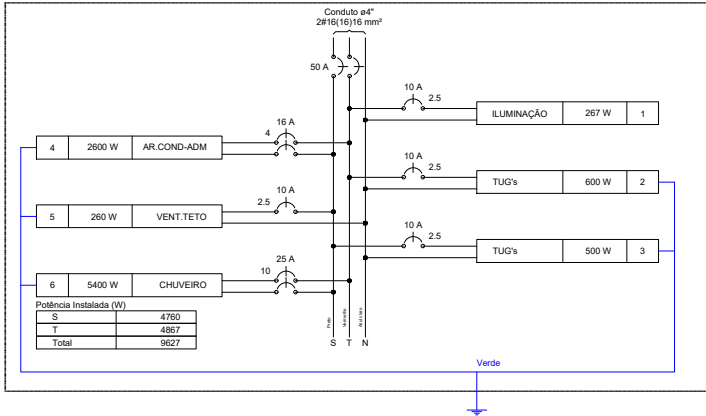
QDLC (LUMINARIAS CAMPO)



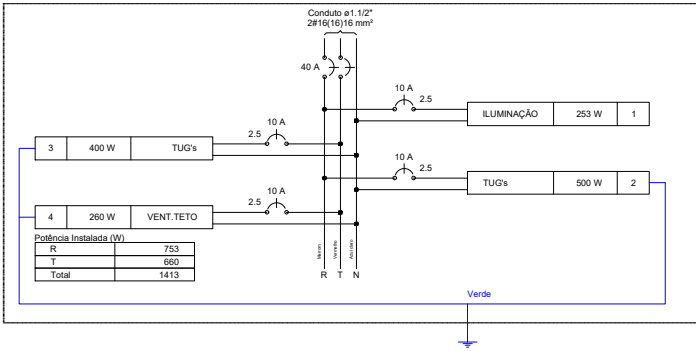
QD1



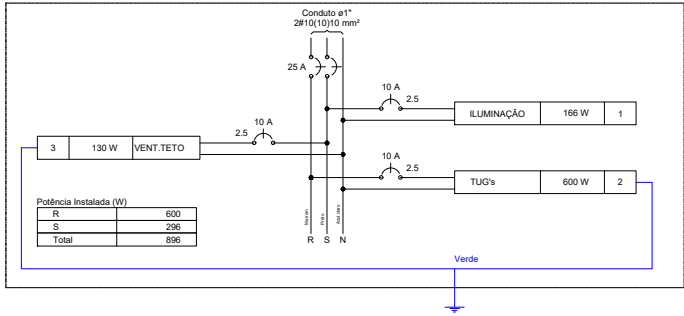
QD2



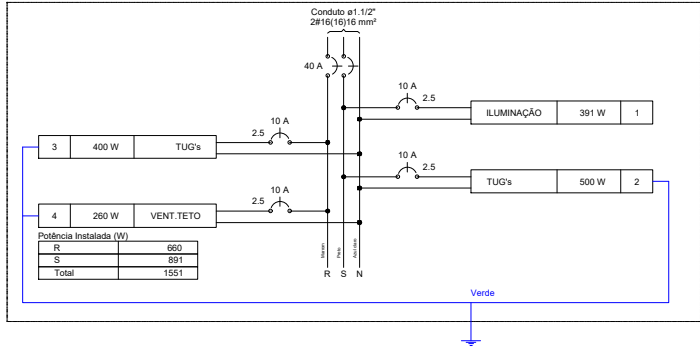
QD3



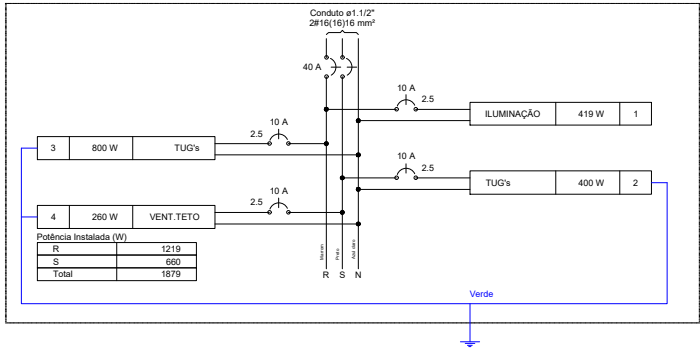
QD4



QD5



QD6



DETALHAMENTO ELÉTRICO

Esc: 1:250



PREFEITURA MUNICIPAL DE
VÁRZEA GRANDE
amar • cuidar • acreditar

PREFEITURA MUNICIPAL DE VÁRZEA GRANDE

Av. Castelo Branco, Espaço Municipal, 2500 - Centro Sul, Várzea Grande/MT
CEP 78125-700 - Fone/Fax: 65 3688 8000

PROJETO:
ESTÁDIO DITO SOUZA

LOCALIZAÇÃO:
RUA PROF. ISABEL PINRO (ESQUINA RUA MIGUEL MARCONDES)
BAIRRO CRISTO REI

ASSUNTO:
DETALHAMENTO ELÉTRICO

DATA:
Set./ 2018

UNIDADE:
Metro

ESCALA:
Indicada

AUTOR DO PROJETO:
CLAUDENIR TOMAS JUNIOR
ENGENHEIRO CIVIL CREA-MT 038835

FOLHA:

02/03